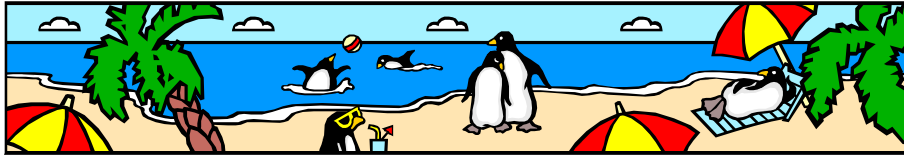


The Penguin Press



September 2009
of Pacific Beach Elementary School

A Newsletter Publication

Principal's Message

Welcome to Pacific Beach Elementary

Whether you are new to our school or returning for another year we are so pleased to have you and your child/ren here at PBE, home of the Penguins. I have met many of you already and hope to meet more of you at Back to School Night on September 16th and Penguin Pride on September 25th and

Back to School Night

Wednesday, September 16th at 5:30 parents will meet in the Auditorium to learn about what's new at Pacific Beach Elementary. Teachers will then be making presentations in each classroom explaining grade level expectations, the importance of daily reading, special projects, and ways parents can help at home.

Student Achievement

We are very proud that student achievement scores increased at PBE! We are so fortunate to have an experienced and talented teaching staff and great students. With parents assisting us both at school and at home we make an incredible team.

Student Assessment

PBE teachers are working with all students to assess their base levels in speaking, listening, reading, writing, and mathematics. Assessments continue all year and are both written and informal as teachers listen to students read, review student writing samples, and learn about students' mathematical reasoning. Work samples will be saved throughout the year to track student progress.

I look forward to working with you and your family this year. Please call or schedule an appointment if you have any questions. We welcome your

involvement in school life, whether it is assisting in class, in the office, in the gardens, or with any of the many activities planned by Friends of Pacific Beach Elementary (FOPBE) and the English Learners Advisory Committee (ELAC).

*For our Students,
Sherry Turner*

Friends of Pacific Beach Elementary

Welcome back to another fabulous year at PBE!

This newsletter is filled with articles about the many upcoming PBE activities. Most of these events are sponsored by the Friends of Pacific Beach Elementary (FOPBE) parents' group. FOPBE meets monthly, generally on the first Wednesday of each month, at **6:00 p.m. in the library** and is open to all PBE parents. Childcare is provided for school-age children. For those wanting to calendar ahead, the meetings will be held October 7, November 4 and December 2, 2009. New ideas and enthusiasm are always welcome at our meetings!

Don't miss our October FOPBE meeting when we will be hosting a delicious pot luck. Please join us in the PBE Library at 5:30pm, for dinner followed by our regularly scheduled meeting.

Make sure to complete and return to your child's teacher, the Volunteer Opportunities form that was included in the first-day packets sent home with the students. Please do so ASAP so you can get involved in your area of interest and help make PBE even better. If you have any questions, feel free to call Dawna Deatruck at 619-885-0492. THANK YOU for your involvement!

Dawna Deatruck, FOPBE President

PB Beachfest is Approaching!!

Each fall, our community holds an annual celebration of the beach, Beachfest, showcasing our wonderful restaurants, artists, businesses and schools. Friends of Pacific Beach Elementary School will be hosting a crazy hair booth. Plan on attending on **Saturday, Oct. 10 from 11 am - 7:30 pm** followed by fireworks capping off the wonderful day at 8:00 p.m. **Volunteers are needed throughout the day to man the booth . If you would like to volunteer, call Dawna Deatrick at 619-885-0492.**

In addition to our booth, there is a Kids' area, morning running race, two stages with performances throughout the day (including PBE's own Big Daddy Blues band), food booths, sand castle competitions and a variety of merchant booths. Beachfest will be held along the boardwalk centering at Grand Avenue. Don't Miss the Fun!



Pizza Wednesday

Join us again this year for one of the school's biggest fundraisers! Pizza Wednesday is a fun time for families and friends to meet and enjoy delicious Woodstocks Pizza for lunch, while raising money for PBE!

Pizza Wednesday begins every Wednesday at dismissal time, 11:55 a.m. Our menu includes Cheese and Pepperoni Pizza (\$1.50/slice), Salad (\$3.50), CinnaBread (\$1.00), Juice/Bottled Water (\$1.00), and Specialty Pizza (\$3.00/slice). Get a "Penguin Pack", which includes a pizza slice, drink, and CinnaBread, for just \$3.25 (a \$3.50 value). Make it easy for yourself and purchase a Penguin Pack card – a prepaid meal plan consisting of 10 Pizza Wednesday lunches. We keep the card on file for you or your child, you'll save 10%, and you no longer need to send money every Wednesday! Interested?? Just ask the Pizza Wednesday staff or purchase your Penguin Pack Card in the office.

Remember, proceeds go to our school to benefit all of our children. Come help us raise money for several important school needs, such as teacher aids, field trips, children's theatre, and many other worthy school projects. It's a fun and delicious way to contribute!

Enrichment

Welcome, new and returning families to Pacific Beach Elementary!

We have so many exciting enrichment programs and assemblies in store for your children this year!

Assemblies

Lambs Players Theater presents "Hip Pocket" a fast-paced, music and poetry-infused performance designed to encourage literacy as well as social and moral responsibility in elementary school students. Rhythmic and exciting with a fantastic message, 'Hip Pocket' will have your kids rockin' to the beat while learning about conflict resolution and respect for friends and teachers!

Mad Science – "Forces of Nature" This educational and entertaining assembly is designed to amaze young audiences and help them discover science in the world around them. This high-energy, exciting performance shows kids just how much fun science can be!

Arithmetickles – the fantastically fun math assembly uses theater games, audience participation, interactive math, teams of kids onstage, and stand-up comedy to make math jump from the page right out of the text book and onto the stage!

Einstein Alive!--Albert Einstein will come to Pacific Beach Elementary with his wonderful all school assembly. He will engage your kids as he shares how he came up with the ideas that changed our world. Einstein will stimulate your students' natural curiosity and take them through several wonderful imagination-stretching experiences to help them learn new ways of thinking in this "minds-on" assembly!

EnviroSchool – In this incredible half day assembly our 4th and 5th grade students are greeted by Dr. Zoolittle--the San Diego Zoo's zany and good-natured "animal researcher" character. During his introductory assembly, Dr. Zoolittle uses magic and animals to teach students about wildlife conservation and recycling through audience interaction and lots of friendly humor. Students then have the opportunity to participate in the following three structured learning activities:

- **The Splash Van:** A mobile science lab featuring five different stations where kids use computers, microscopes, chemistry experiments and living

creatures to learn about water quality and insect life. The lab teaches students the connection between human activities and the health of the environment.

- **The Green Machine:** An interactive exploration program that teaches agricultural awareness at three stations: a soils research station with live earthworms, the water cycle station with dramatic role play scenarios and costumes, and an integrated pest management station with interactive role play and insect puppets.
- **Waste Reduction & Recycling Presentation and the Recycling Relay:** A hands-on presentation with displays of items made with recycled materials that teaches students the importance of waste prevention, reducing, reusing, composting, and recycling followed by a high-energy recycling race where the environment is the winner. The Green Machine, Splash Van and relay are operated by the San Diego County Office of Education.

Big Daddy Blues - Pacific Beach Elementary's very own blues band! Featuring teachers and parents of Pacific Beach Elementary, *Big Daddy Blues* will have you up on your feet singing and dancing in the aisles! PB's got soul!

"Family Arts Night!" This year Pacific Beach Elementary will have a fantastic arts night presented by **Young Audiences of San Diego**. Our families will be creating elaborate, decorative Mardi Gras masks while enjoying a performance by **SOL E MAR - DRUM CARNAVAL! A CELEBRATION OF CUBAN AND BRAZILIAN MUSIC**. Your students will discover Samba and the joyous celebration of life that happens in Brazil's annual Carnival celebration. These gifted musicians, who perform on a varied array of percussion instruments, will give a taste of the fascinating musical rhythms of Brazil and Cuba and a short history of this music and its African heritage.

After School Enrichment

Here are some of the after-school programs we will offer this year. Keep an eye out for the fliers detailing each one of these different after-school opportunities!

Mad Science

Math Club

Speak It and Sing It in Spanish!

After School Tennis

Play-Well TEKnologies-Lego Engineering

Wood Working Club

Honor Choir

Once again our marvelous teachers will be receiving enrichment funding to provide added hands-on materials, field trips, and other enrichment opportunities for their students in art, music, science and math!

There will be so many enrichment opportunities for your child this year here at Pacific Beach Elementary. **Help us keep all these great programs going by being a volunteer, contributing to our fundraisers and supporting this wonderful school. We look forward to an exciting, enriched, fun-filled year!**

Missoula Children's Theatre **Returns to PBE!**

FOPBE is pleased to welcome back Missoula Children's Theatre for it's 8th year! This arts education group provides high-quality musical theatre experiences for our students. This year's production will be Pinocchio with more than 50 student roles available. Two theatre professionals from Missoula will spend a week of rehearsals with our students, culminating in an amazing production to be performed on Saturday, October 17 at 3pm and 7pm. They will also conduct a series of drama-based workshops in some of the classrooms.

Auditions for Pinocchio will be held on Monday, October 12th from 2:30 - 4:30 pm in the auditorium. All students Kindergarten through 5th grade are encouraged to audition, if their schedule that week allows. Those auditioning should arrive at 2:30 pm on Monday. Students should plan to stay for two hours. Students cast in lead roles that day will be asked to stay for a rehearsal immediately following the audition. Permission slips from parents are required for students to audition and will be sent home with your child and will also be available in the school office. Not all students who audition are guaranteed roles, though every effort is made to ensure that your child's audition experience is positive and fun. Permission slips for auditions are due by Tuesday, October 6th, to your child's teacher or the school office.

Missoula Children's Theatre touring productions provide costumes, scenery, props and makeup. They will conduct **MANDATORY** rehearsals throughout the week from 2:30 - 7:00 pm, staggering times for different parts of the cast. It is one week that will remain in your child's memory forever.

Among the roles to be cast are Pinocchio, Candlewick, Blue Fairy, Jiminy Cricket, Stromboli, Candlewick's Crew, Puppets, Urchins & Toys. No advance preparation is necessary. Assistant Directors will also be cast to aid in rehearsals throughout the week and to take on essential backstage responsibilities.

Whether or not your student plans to be in the performance, we're certain s/he will want to be an audience member with you. Missoula Children's Theatre productions are always memorable and a wonderful introduction to theatre. Mark your calendar for Missoula Week at PBE!

PINOCCHIO SCHEDULE

Mon 10/12 :

Auditions 2:30 - 4:30 (also 5 - 7 pm for lead roles cast)

Tue 10/13 thru Fri 10/16 :

Rehearsals Afternoon & Early Evening

Sat 10/17:

Dress Rehearsal 11 am

Performances 3 pm & 7 pm in the auditorium

Questions? Contact FOPBE member, Lani Ryan at 858 488 5338 or laniryan@hotmail.com

Scholastic Book Fair



Destination BOOK FAIR Read Around the World!

Friday, September 25 – Thursday, October 1

Please join us in sharing a love of reading with our students at Pacific Beach Elementary and raise money for our school at the same time.

Visiting our book fair with your child is a great way for kids to connect with books they want to read! You'll be amazed to see how excited the kids are to visit the Book Fair each year. Our annual Scholastic Book Fair will begin in the Library on Penguin Pride Night, Friday, September 25. It will continue the following week, Monday, September 28 through Thursday, October 1. Our school will receive 25% of the money from each sale made at the Book Fair, so please spend generously and remember you are helping PBE, while encouraging your

child to read at the same time.

Before the fair opens, a book list and wish list envelope will come home with your child. Please spend some time with your child looking at the list and discussing and using the wish list envelope to write what might be the best book(s) for them to purchase. You may enclose money in the envelope for safe-keeping. PBE's Library Assistant Connie Mason will allow students to purchase books Monday through Thursday during recess. Visiting the Book Fair at Penguin Pride Night will give you priority shopping, but parents will also be able to visit the fair with children after school on:

Monday, September 28, 2:10 – 3 pm;

Tuesday, September 29, 2:10 – 3 pm;

Wednesday, September 30, 12:00 – 1:30 pm; and

Thursday, October 1, 2:10 – 3 pm.

While visiting our Book Fair, stop by to check out each teacher's Classroom Wish List. Your child will enjoy choosing a book to give to their teacher. By purchasing books from the Wish Lists and donating them to your child's class, you are helping to add books to our classroom shelves. Please help make this year's Book Fair a success! Remember, FOPBE will receive 25% of the money from our sales!

PENGUIN PRIDE CONTRIBUTION DRIVE

It is time once again for FOPBE's annual Contribution Drive! Flyers and envelopes will go home with each child on September 23th. Please take the time to send in a donation to the "Friends of Pacific Beach Elementary" (FOPBE) which is the Parent Teacher Organization (PTO) at our school. Your donation is 100% tax deductible and provides benefits directly to the children of our school by supplementing funding for existing programs, educational supplies, facility needs and equipment.

Each student who brings in a contribution will receive a coupon for a FREE slurpee at our local 7-11. Additionally, the classroom with the highest percentage of student participation will receive an ice cream sundae party!

We will also be happy to accept your contribution on Penguin Pride Night – Friday, September 25th. Look for our table. Additional envelopes will be available there, or you may pick one up in the school office.

The Contribution Drive continues until October 10th. All \$\$\$ amounts are appreciated. Thanks for your support.

Calling All Art Attack Volunteers!

Please join us at the Art Attack informational meeting on Friday, September 18 at 8 am in the Cafeteria. This meeting will explain our parent-run art program, including the sequencing of the lessons and how to prepare for the lessons, and we will unlock the secrets of the art supply room!

By participating with PBE's Art Attack program, you will be enriching the lives of our students, as well as getting to know your child's classmates. No art experience is necessary to participate in this fun and greatly rewarding program. We look forward to seeing you on September 18!

Let the Games Begin!

.....
 Take Part in our Genevieve's Gift Wrap Fundraiser!
 Pacific Beach Elementary Announces our
 "All-Star" Fall Fundraiser
 September 21 - October 5
We need your help!!

Your purchase from our Genevieve's fundraiser supports and positively impacts our students!

Genevieve catalogs include quality wrapping paper, gourmet food and treats and unique gifts.

Our school earns up to 50% profit!!
 You'll help fund student enrichment, field trips and so much more,
 Parents and teachers will also be grateful to see programs better than before!
 So let's hit this one out of the park and HAVE A BALL!!

Attention parents of students learning English!

Welcome new parents and returning parents. Remember there is an organization on our campus to provide information to parents whose children speak other languages. The organization is English Learners Advisory Committee (ELAC). Your contact person is Patty Clark (858) 488-8316.



Every Friday is "Penguin Friday" don't forget to wear clothes with a Penguin on it.

eScrip

What is eScrip?

eScrip is a hassle-free way for schools and groups that support children's programs to raise funds through everyday purchases made at eScrip merchants.

How does it work?

eScrip and merchant partners have created a system that rewards customer loyalty by contributing a percentage of purchases to your chosen group.

Parents, teachers, friends and families are encouraged to register their credit, debit and grocery club cards as supporters with the eScrip program. Upon receipt of registration, a percentage of all purchases made at eScrip merchants will be given back to the designated school or group.

Simple Registration

- Log on to www.eScrip.com and go to "sign up".
- Designate your favorite school or children's group to receive contributions.
- Register your grocery club card from a participating merchant and your debit/credit cards.
- **That's it! Visit eScrip merchants to shop and earn.**

deadline for all orders is
October 7, 2009

Visa/Mastercard accepted
Don't Miss Out! This will
be the only chance to
order this year!!

PBE DRESS CODE

Children are encouraged to wear clothing that is clean, neat and appropriate for their age. Baggie pants, halter-tops and spaghetti straps are not to be worn. Flip flops, high heels, sandals and any other dangerous footwear will not be permitted. The state requires physical education activities. Tennis shoes closed-toe rubber -soled shoes are the safest shoes to wear on the playground for these activities.



Please take note of the signs posted prohibiting dogs from campus **at all times**. For the safety of our staff and students, PBE staff will be enforcing this regulation immediately. Thanks for your cooperation.



Student Council Elections are coming soon. Start practicing your speech and get those posters decorated. More info to follow!!



PENGUINS ARE GREEN!

Welcome back to school and a fun-filled academic year ahead. At the beginning of the school year we have renewed energy and commitment to learn and grow, as students and families. One area in which we can continuously grow and learn is our commitment to our environment. Here are a variety of ways students and families can simply lend a hand to mother earth:

- Purchase school supplies made of recycled products
- Reduce the amount of waste you create (do you really need to print that email?)
- Opt for reusable containers (such as Tupperware, etc.) in lunches instead of plastic baggies; choose a lunch box instead of bringing lunch in a disposable bag
- Drink from reusable containers, whether it is for your water, coffee, hot chocolate, etc.

- Recycle the plastic bottles and cans you use (we have onsite campus recycling!)
- Volunteer with the PBE Green Team
- Participate in local beach and community clean-up events. The 25th Annual California Coastal Clean-up Day is on September 19 at Pacific Beach's Tourmaline Beach from 9 a.m. – 12 noon. Registration is required and can be found at

<http://www.cleanupday.org/cleanupsites.htm?ID=C&ID2=109>

- **GREEN Note:** California Redemption Value (CRV) is a deposit paid on purchases of certain recyclable beverage containers. The consumer pays CRV on the purchase of beverages with aluminum, plastic, glass. CRV from those containers can be reimbursed if the containers are brought to a recycling center. If you donate your CRV plastic bottles and aluminum cans to PBE, it helps fund our FOPBE sponsored school programs.

To volunteer on the GREEN TEAM, submit comments, etc., please contact Bridget Santos at brsantos@san.rr.com.

Dads + Football = FUNraiser



Dads-don't miss this fun opportunity to meet other dads, eat great food catered by Taco Surf, watch football and raise money for PBE. Dawn and Doug Knight will host this great fundraiser on October 19th at 5:30pm. Watch the San Diego Chargers stomp the Denver Broncos projected on an outdoor screen. Last year was a big success. Look for more info to follow. Tickets are \$50 each.



Art At PBE!!

Join everyone at the Tile Table at **Penguin Pride Night** to create a tile to decorate PBE forever! Tiles are \$15 and are available Friday Night or we can schedule another time if you can not make Penguin Pride Night. Contact me at carolynwillissnead@hotmail.com if you have any questions. Thanks!



Beginning October 2nd, the 5th grade class will be selling Ice Cream every Friday right after school. All sales benefit their end of the school year activities.